

Year to Date Numbers

Foodbank

Parcels Provided
3163

People Supported
6745

Meals Distributed
151,886

Single People Supported
1885

Families Supported
1757

Soup Pot

715 Customers
(Numbers are reduced due to the closure of the service from Mar to Oct 2020)

Starter Packs

77 Distributed
Supporting 82 Adults and
46 Children

School Uniform Bank

543 Children Supported
425 Referrals
Received
24 nurseries, primary &
secondary schools supported.

Volunteer Newsletter 12 Feb 2021

Gate Updates & Developments

What a year 2020 was for The Gate! We started the year busy as usual as the winter period is always our busiest times and expected services to return to normal by March 2020. How wrong were we? **When Covid affected our community, Foodbank referrals increased by over 100%.** During the lockdown period we also accepted self-referrals and operated a weekend helpline to ensure that the most vulnerable were supported. Volunteers delivered thousands of food parcels, toiletry packs and essential cleaning items directly to service users' doorsteps during this time and are continuing to do so to safeguard everyone involved. Sadly, we had to temporarily close our Soup Pot and social projects due to legal requirements. Rita McNeil was really upset about closing the doors but was pleased to reopen in October although for Take Away only. **Rita said "It was something really different for us. We like to have folk come in and to have a wee blether while they have lunch but if this is what it takes to support people, we will give it a go"**! The last week of the year we provided 19 of our Soup Pot regulars with a full Christmas lunch via take away. Rita said **"The team missed having the Centre all decorated and our folks in at Christmas time for this yearly lunch but hopefully we will be able to do it all properly this Christmas"**.

Our **School Uniform Bank** also recorded the highest numbers of children supported to date. Towards the end of 2020, **we welcomed two new full-time members of staff. Jilly Guild, Chief Officer and Michael Greer, Community Chef. Jilly is working hard to develop our Charity just in time for our 10th anniversary this year. Michael is also working hard to introduce two new projects to The Gate, Meals @ The Gate and a Food Academy.** We will require new volunteers for both of these projects when Covid is over and we will keep you constantly updated and informed about any progressions. In the meantime, please see page 2 for further information about the **Meals @ The Gate** project.

We could not operate our projects without the valued help we receive from our volunteers. Please Continue to Support Us! We are proud to be a charity supported by the community for the community by such a kind, hard working and valuable team. We understand that a large majority of our volunteer group are still self-isolating due to the effects of Covid 19. Hopefully, the end is near with the new vaccine being rolled out and we can all be together again soon working within our community café, social groups and new projects that could offer volunteers new and exciting opportunities!

Welcoming Jilly & Michael!



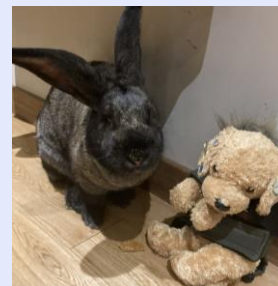
Meals @ The Gate

Are you over 65 years old?
Would you like fresh
delicious meals delivered
straight to your door?
Do you live within
Clackmannanshire?

If you answered YES to the
above then speak with Jilly or
Michael (01259 218766) for
further information about this
service.

This service is available to
anyone living in
Clackmannanshire including
Gate Volunteers!

Jackson's Journeys!



Jackson has just
returned from self-
isolating with Ginny!
Jilly's 3-foot
Continental Giant
Rabbit at her home!



Project Statistics, Developments and News!

"Alone we can do so little; together we can do so much."

Helen Keller

Want to know more about the Meals @ The Gate service?

Here are our most frequently asked questions:

How much do the meals cost?

Meals are £5.00 for three courses.

Do I have to get them every day?

No, you can have them as often as you like. We can only deliver Monday – Friday.

Are the meals delivered hot?

No, meals are delivered chilled, in microwavable containers.

Deliveries are made between 10-11.30am.

How many choices will I get?

Daily there will be two soups, three mains and two desserts to choose from.

I have food allergies; can I sign up?

Yes, we can cater for most allergies or dietary requirements - just let us know when you register.

Can I sign my Grandparents up?

Yes, just make sure that they are aware.

How do I pay?

We will invoice you in advance either weekly or monthly depending on your preference.

Is the chef any good?

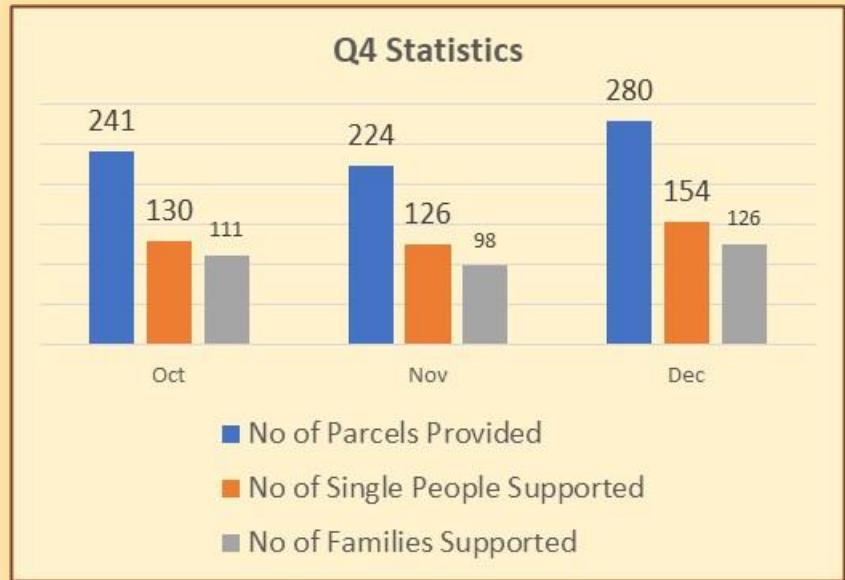
YES, he's fantastic! 😊

How do I sign up?

Call 01259 218766 or

Email: meals@the-gate-charity.org

the gate foodbank



We are still requesting the reasons for referrals although we are not analysing these during these busy times. The above statistics predominately reflect people struggling with poverty, insufficient benefits, fuel poverty, feeding children who were constantly at home, timing delays with benefits, and new claims delays. Hopefully 2021 will see a reduction in people requiring support with the introduction of the new Covid vaccine being rolled out. Hopefully the end to the nightmare is near!

Q4 Meals Distributed
19,725



Family Food Packs

During the first 3 weeks in January, we provided **67 families** with a Family Food Pack to support the most vulnerable throughout lockdown. No referral was necessary, a parent could simply turn up at The Gate to collect pack. This initiative supported **239 children** during this time who were most financially affected by the pandemic.

Soup Pot

During Q4 we provided **242 customers** with hot food and drinks via a take-away service.

Home Starter Packs

During Q4 we distributed **26 starter packs** to people moving from homeless accommodation into permanent tenancies!